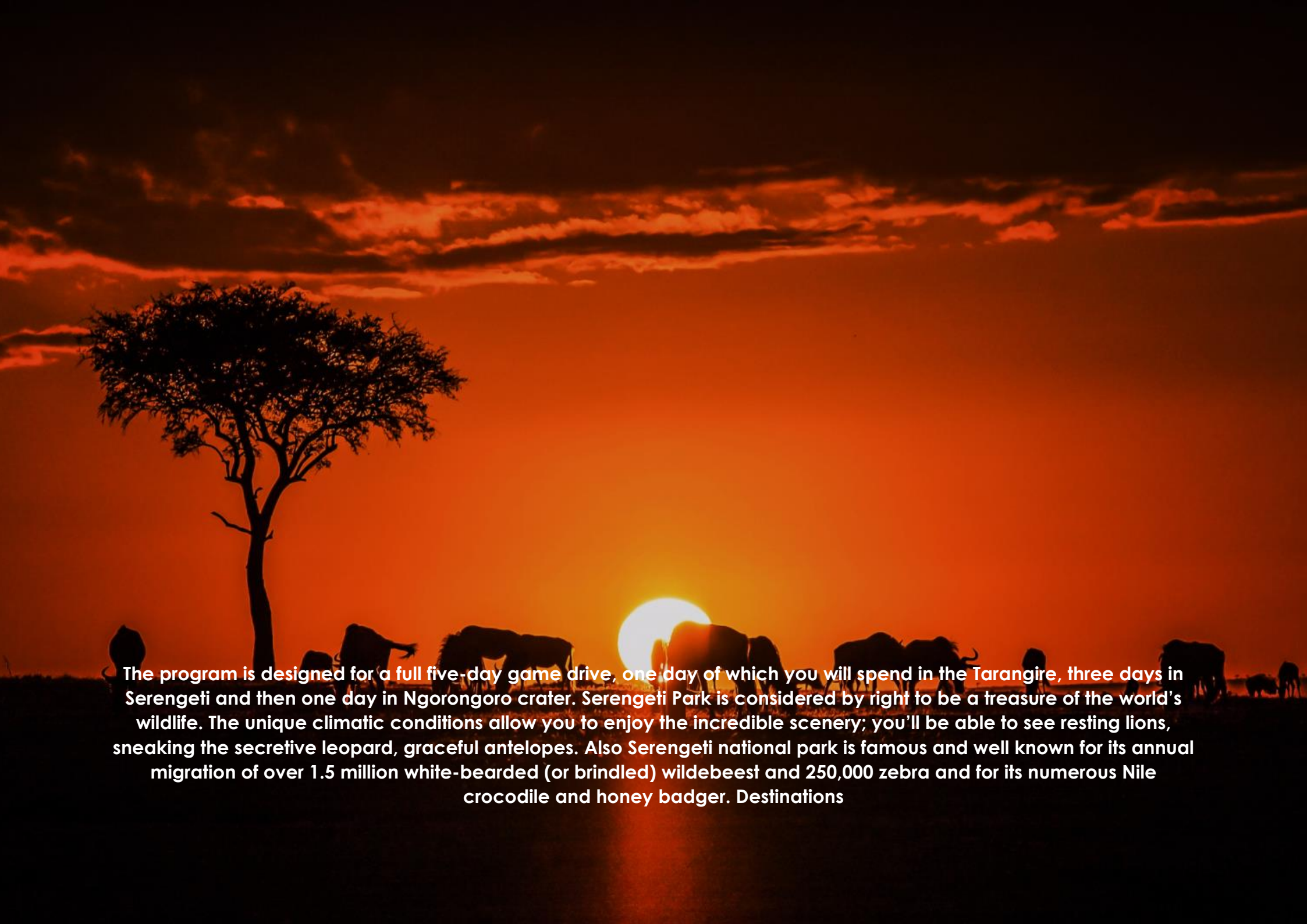


# 5 DAYS LUXURY LODGE SAFARI



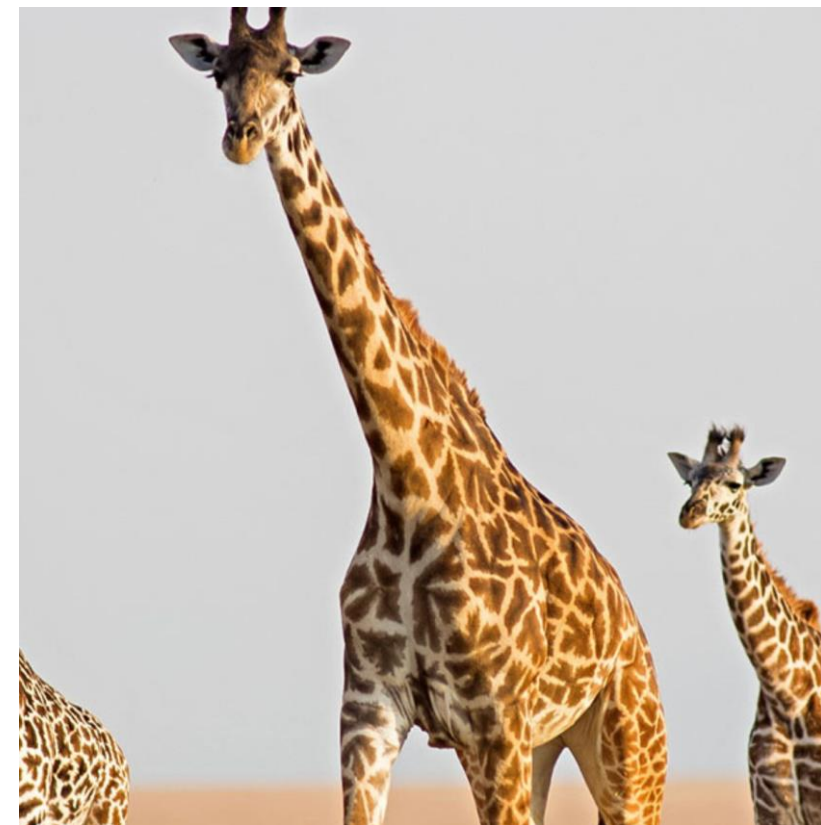
**TRAVEL  
WITH  
CONFIDENCE**

A dramatic sunset over a savanna landscape. The sky is a deep orange-red, with a bright sun low on the horizon. In the foreground, the silhouettes of a herd of animals, including a large tree on the left and several animals in the center and right, are visible against the glowing sky. The overall scene is peaceful and evocative of a wild African landscape.

**The program is designed for a full five-day game drive, one day of which you will spend in the Tarangire, three days in Serengeti and then one day in Ngorongoro crater. Serengeti Park is considered by right to be a treasure of the world's wildlife. The unique climatic conditions allow you to enjoy the incredible scenery; you'll be able to see resting lions, sneaking the secretive leopard, graceful antelopes. Also Serengeti national park is famous and well known for its annual migration of over 1.5 million white-bearded (or brindled) wildebeest and 250,000 zebra and for its numerous Nile crocodile and honey badger. Destinations**

# HIGHLIGHTS

- Witness the world-famous migration of over 1.5 million wildebeests and 250,000 zebras amidst diverse wildlife in Serengeti National Park.
- Experience Tarangire's remarkable elephant concentrations and iconic baobab landscapes.
- Explore the UNESCO-listed Ngorongoro Crater, a hotspot for spotting the Big Five amidst breathtaking scenery.
- Stay in top-tier lodges like Ngorongoro Oldeani and Kubukubu Tented Camp, with gourmet meals.
- From arrival at Kilimanjaro International Airport to the final departure, enjoy seamless transfers, expert guides, and detailed briefings, ensuring a hassle-free and enriching safari journey.





## DAY BY DAY ITINERARY

### **DAY 1: ARRIVE IN TANZANIA**

You will be picked up at the Kilimanjaro International Airport and transferred to your hotel in Arusha town; you will meet your guide who will brief you on your upcoming safari. All the basic information about your safari will be given to you by safari guide.

- Hotel check in starts at 12:00pm
- Overnight at SG Premium Resort
- Note: No meals included



## **DAY 2: ARUSHA - TARANGIRE NATIONAL PARK - KARATU**

**Distance: 140 km**

You will be picked up at your hotel in Moshi/Arusha at 07:00hrs and transferred to the Tarangire National Park to start off your game viewing experience in this magnificent park which is famous for its large collection of baobab trees, spectacular large mammal population and variety of bird species, not to mention one of the largest concentration of elephants in the country. After your tour around the park, you will be transferred to your lodge in Karatu where you will be spending the night.

- Overnight will be spent at Ngorongoro Oldeani Mountain Lodge
- Meals: Breakfast, Lunch & Dinner Included



## DAY BY DAY ITINERARY

### **DAY 3: KARATU – SERENGETI NATIONAL PARK**

**Distance: 205 km**

You After breakfast we head towards the Serengeti National Park, via the beautiful high lying farmland of Karatu and the Ngorongoro Conservation Area. Leaving the highlands behind, we descend into the heart of wild Africa – the Serengeti National Park – with its endless plains, rolling into the distance as far as the eye can see. We head to the central park area, known as the Seronera area, one of the richest wildlife habitats in the park, featuring the Seronera River, which provides a valuable water source to this area and therefore attracts wildlife well representative of most of the Serengeti's species. We arrive in time for lunch and enjoy an afternoon game drive in the Serengeti national park. After your tour around the park, you will be transferred to your lodge where you will be spending the night.

- Overnight at Kubukubu Luxury Tented Camp
- Meals: Breakfast, Lunch & Dinner Included



## DAY BY DAY ITINERARY

### **DAY 4: SERENGETI NATIONAL PARK**

**Distance: 205 km**

Following breakfast, you will spend the whole day on a game drive in the Serengeti National Park and have lunch at a picnic spot en-route. Depending upon the time of year, you might even have the chance to witness the great migration with hundred thousands of wildebeests, zebras and Thompson gazelles. During the small rainy season in October and November, you will typically see these herds moving from the Kenyan Masai Mara through the northwest of the Serengeti to the plains in the south. After the great rainy season in April, May and June, the herds slowly travel back through the western and north-western part of the Serengeti. Your guide will try his outmost to find the animals and will make sure that you can see them from the best spot in the national park. Naturally, the migration also attracts predators and with luck you might see a kill in action. You will spend your night at the same lodge.



## DAY BY DAY ITINERARY

### **DAY 5: SERENGETI NATIONAL PARK – NGORONGORO CONSERVATION AREA**

**Distance: 145 km**

Dawn is a good time to watch wildlife and so you will be up early to join an early morning game drive. You will return to the camp for breakfast before heading out for another game drive in the park. Here in the Seronera region you will often see wildebeests and zebras in close proximity of lions and other predators such as leopards and cheetahs. After a picnic lunch you will continue your journey towards the Ngorongoro conservation for overnight.

- Overnight at Ngorongoro Sopa Lodge
- Meals: Breakfast, Lunch & Dinner Included



A large herd of wildebeest is shown in a savanna landscape. The animals are in various poses, some looking towards the camera. The background is a dry, open plain with some sparse vegetation.

## DAY BY DAY ITINERARY

### **DAY 6: NGORONGORO CRATER – MOSHI/AIRPORT**

**Distance: 273 km**

You After an early breakfast you will drive down the steep and narrow road that takes you into the crater. The slopes are forested but soon the landscape changes to savannah. Here the wildlife is just breath-taking and with a little luck you can observe the Big Five – lion, elephant, buffalo, rhino and leopard – in just a few hours. You should also see warthogs, wildebeests, zebras, hippos and some of the more than 500 bird species of the area. After a morning dedicated to game viewing and a picnic lunch, you will leave the crater in the early afternoon to drive back to Moshi, where you will arrive in the early evening.

- Overnight at Kilimanjaro Wonders Hotel
- Meals: Breakfast & Lunch included

A sunset over a savanna landscape with silhouettes of acacia trees. The sun is low on the horizon, casting a warm orange glow across the sky. The trees are dark against the bright background.

## **DAY BY DAY ITINERARY**

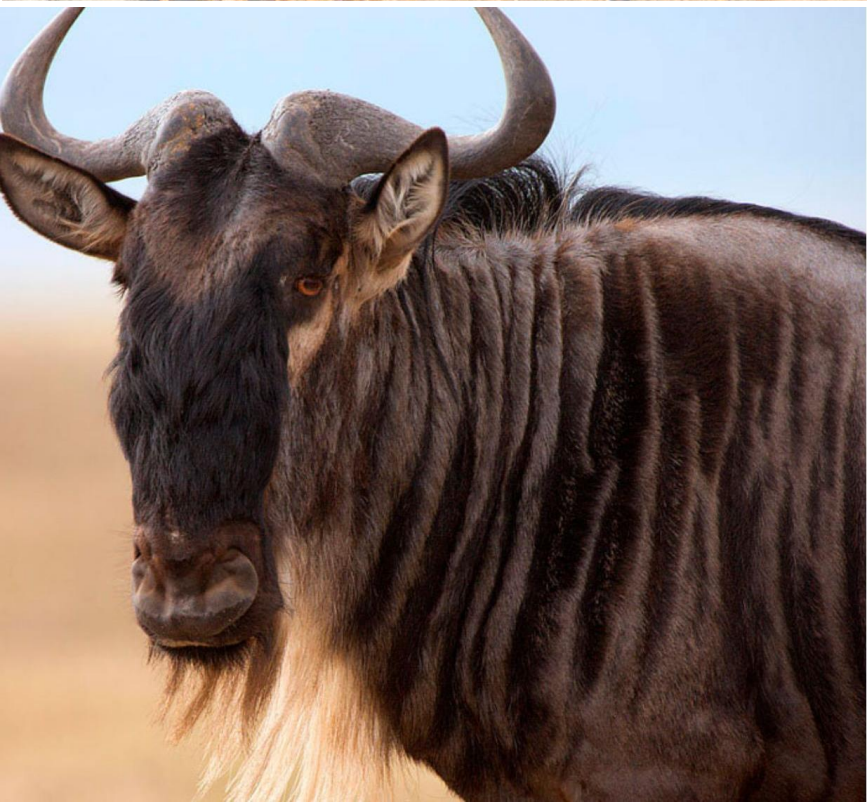
### **DAY 7: DEPARTURE DAY**

Rest in the hotel and transfer to the airport. Hotels check out is 11:00am. In case you need a late check-out because of an evening flight, you have the option to extend your hotel stay till 6:00 PM for an extra fee.



## **INCLUDES**

- *Airport transfer*
- *All meals and accommodation as per itinerary*
- *Expedition Leader/Professional Driver Guide*
- *Park fees and Government taxes*
- *Complimentary Maasai blanket*
- *Snacks/Drinking Water/ Other soft drinks*



## **EXCLUDES**

- *Optional excursions and activities not listed in the itinerary*
- *Tips, Gratuities, Laundry and other items of personal nature*
- *Alcohol beverages*
- *Visa and related cost*
- *Insurance*
- *International flights*



## OFFICE ADDRESS

[P.O.Box 1983, Arusha, Tanzania](#)

## CONTACT

Call - [+255 718 531 991](tel:+255718531991)

Email - [info@tanzaniasafariagency.com](mailto:info@tanzaniasafariagency.com)